

4206 Cliff Street

*\$333,683

*Price subject to
change as final upgrades
are completed

UNDER CONTRACT !!!

All Pictures of previously SOLD models

All dimensions figures and measurements are estimates and should be verified

The Sage Homes "**Kenai II**" has an open floor plan that is **Comfortable, Charming and Warm!** Located in Beautiful **GRAND VIEW HEIGHTS**, this home has an inviting **kitchen with an Island**, Vaulted Ceilings and Hardwood Floors. The roomy main level Master Bedroom features a generous 5 piece Master Bathroom and a Huge Walk-in closet. With 2 bedrooms and a Full bath upstairs, the loft overlooking the living room is Awesome!



This Well Designed "Five Star Energy" 2 Story Home, Boasts 9 Foot Ceilings, **Tharp Custom Cabinets** and a Quality of Construction found only in high end homes. This Home also can be upgraded to suite your taste - including but not limited to: Granite Counter tops, Cityscape cabinetry, Gas Fireplace, and Beautiful Alder Trim package. Roomy and & well lit basement.

FEATURES

- OPEN FLOORPLAN!
- Awesome Kitchen!
- Ceramic Tile
- Cityscape cabinetry
- Hardwood Floors
- Gas Fireplace
- 3 Bedrooms, 2.5 Baths
- Main Floor Master Bedroom
- 5 piece master bath
- Five star energy rated
- Unfinished 8' basement
- Front Landscaping with Sprinkler
- Den / Office
- Covered front porch
- MASSIVE 3-Car Garage

Gem City Real Estate Dan Brain—Broker/ Owner
307-760-2794 (cell)

706 S 3rd Street Laramie, WY 82070 • 307-742-9990 (office)





FRONT ELEVATION-B
Scale 1/8"=1'-0"



FRONT ELEVATION-A
Scale 1/4"=1'-0"



BACK ELEVATION
Scale 1/4"=1'-0"

Copyright © 2004 by Sage Homes, Inc. All Rights Reserved. This drawing is the property of Sage Homes, Inc. and is not to be reproduced, stored in a retrieval system, or transmitted in any form or by any means, electronic, mechanical, photocopying, recording, or by any information storage and retrieval system, without the prior written permission of Sage Homes, Inc.

THE KENAI
Sage Homes

118-06
118-07
118-08
118-09
118-10

118-11
118-12
118-13
118-14
118-15
118-16
118-17
118-18
118-19
118-20
118-21
118-22
118-23
118-24
118-25
118-26
118-27
118-28
118-29
118-30
118-31
118-32
118-33
118-34
118-35
118-36
118-37
118-38
118-39
118-40
118-41
118-42
118-43
118-44
118-45
118-46
118-47
118-48
118-49
118-50
118-51
118-52
118-53
118-54
118-55
118-56
118-57
118-58
118-59
118-60
118-61
118-62
118-63
118-64
118-65
118-66
118-67
118-68
118-69
118-70
118-71
118-72
118-73
118-74
118-75
118-76
118-77
118-78
118-79
118-80
118-81
118-82
118-83
118-84
118-85
118-86
118-87
118-88
118-89
118-90
118-91
118-92
118-93
118-94
118-95
118-96
118-97
118-98
118-99
118-100

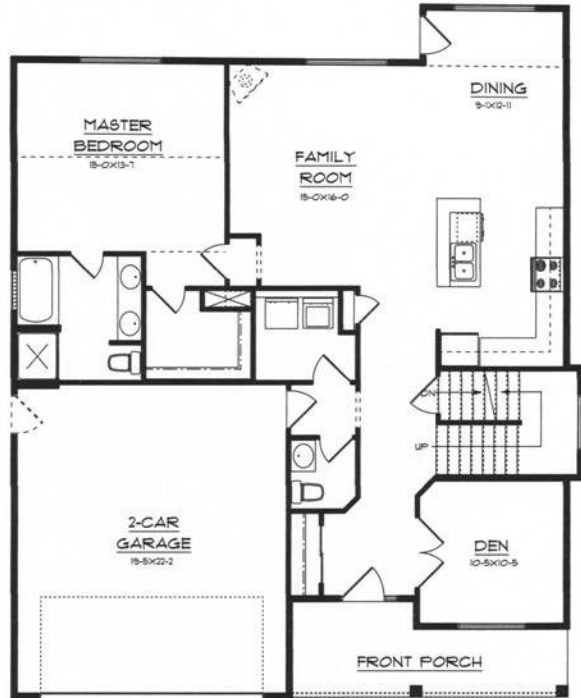
10f6



BATHROOM
OPTION



UPPER FLOOR PLAN
643 Fin&Aft



MAIN FLOOR PLAN
1334 Fin&Aft

Kenai II